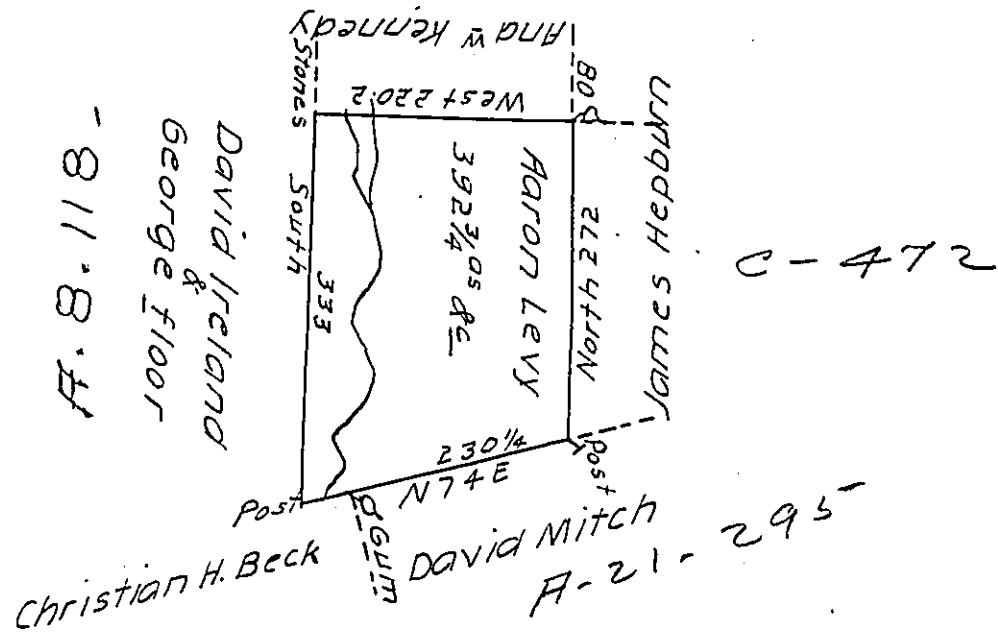


Foster -  
LUZERNE



A draft of a tract of land called \_\_\_\_\_ Situate on the  
 waters of black creek in the County of Northum<sup>d</sup>.  
 Containing three Hundred & Ninety two Acres  $\frac{3}{4}$  & all  
 Surveyed for Aaron Levy the 9<sup>th</sup> day of Sep: 1793 by Virtue  
 of a Warrant dated the 13<sup>th</sup> Day of <sup>June</sup> ~~Sept~~ 1793

by

W<sup>m</sup> Gray D.S.

To

Daniel Brodhead Esq.  
 Surv: Gen! }

IN TESTIMONY that the above is a copy of the original remaining on file in  
 the Department of Internal Affairs of Pennsylvania, made  
 conformably to an Act of Assembly approved the 16th day of  
 February, 1833, I have hereunto set my Hand and caused  
 the Seal of said Department to be affixed at Harrisburg,  
 this nineteenth day of February, 1912.

*Nancy Howell*  
 Secretary of Internal Affairs.